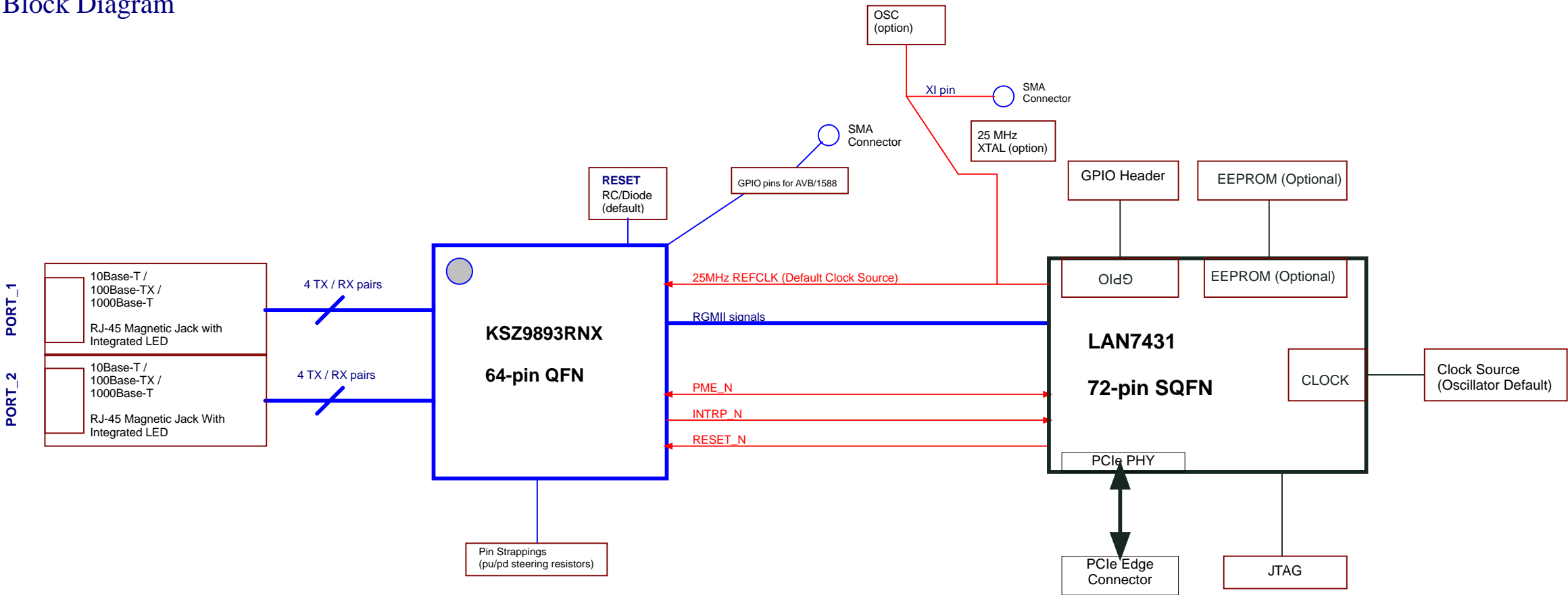


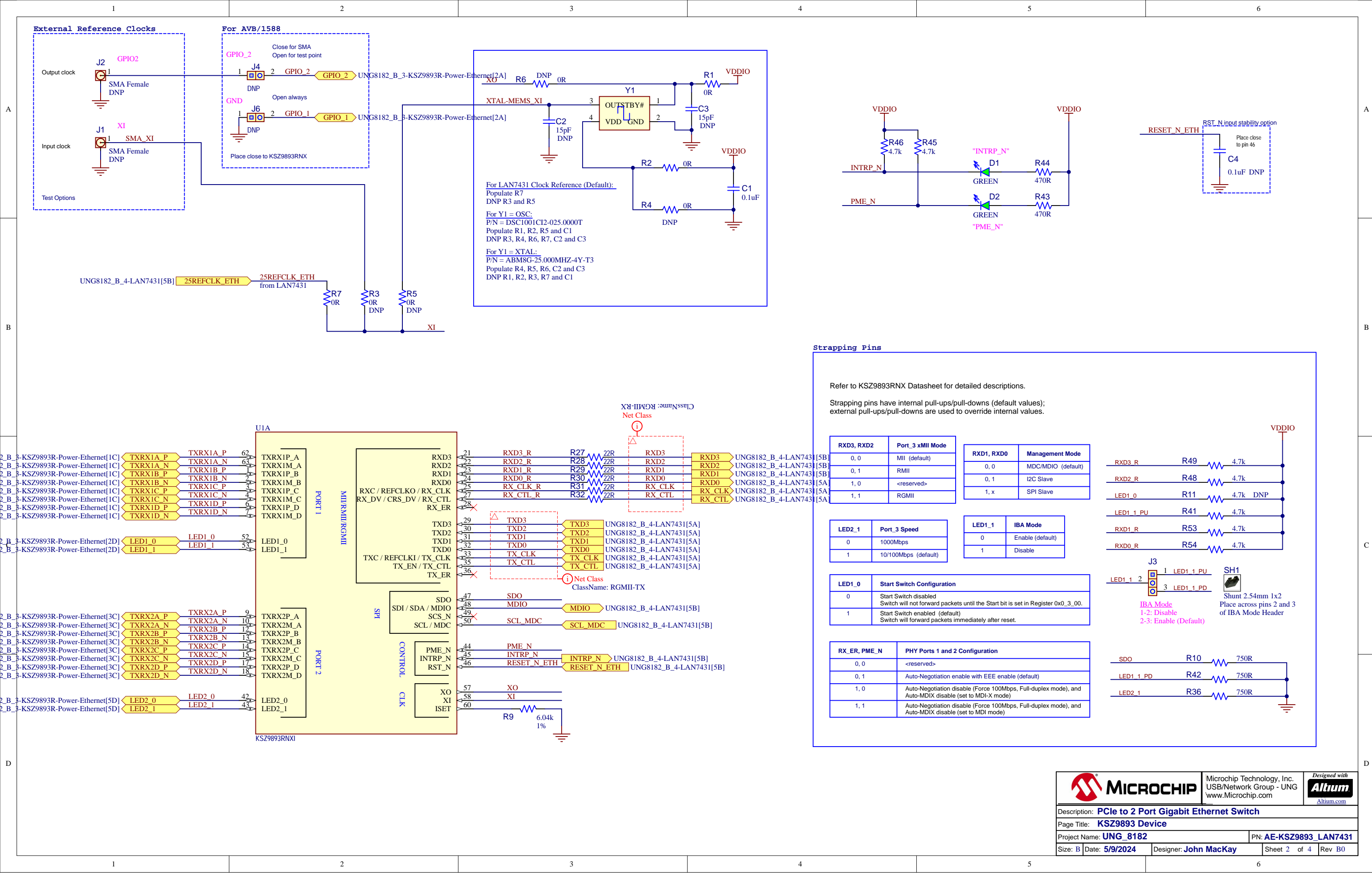
PCIe to 2-Port Gigabit Ethernet Switch

| Table of Contents | |
|-------------------|------------------------|
| Sheet | Description |
| 1 | Block Diagram |
| 2 | KSZ9893 Device |
| 3 | KSZ9893 Power/Ethernet |
| 4 | LAN7431 |

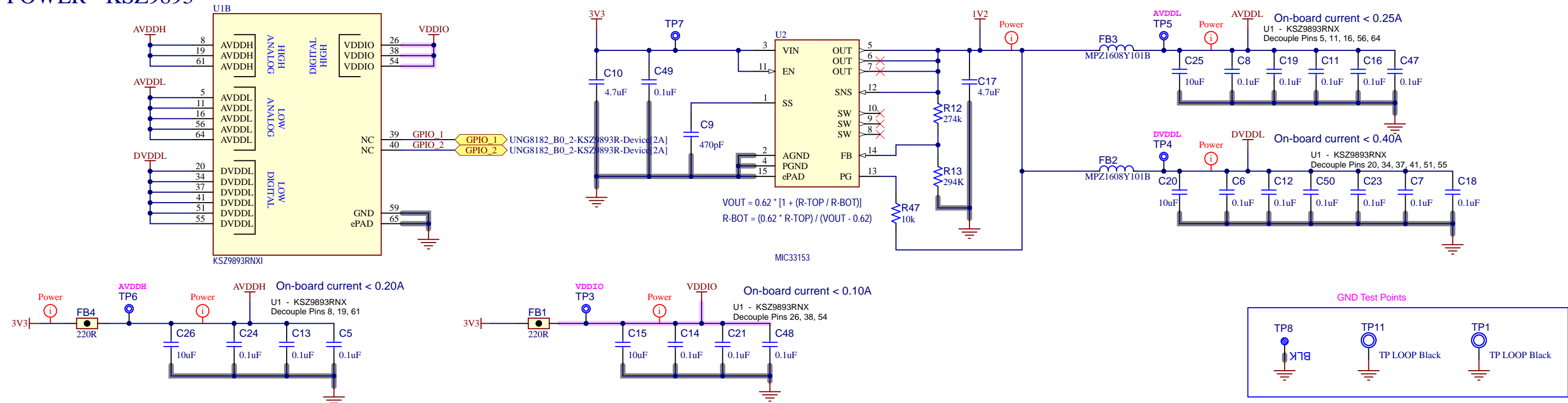
| Revision History | | | |
|------------------|-----------|---|-------------|
| Revision | Date | Revision Summary | Author |
| A0 | 8/14/2018 | Initial Release | John MacKay |
| B0 | 5/9/2024 | Change R53/R54 from Pull-Down to Pull-up (KSZ9893 to use SPI) | John MacKay |

Block Diagram





POWER - KSZ9893



ETHERNET

