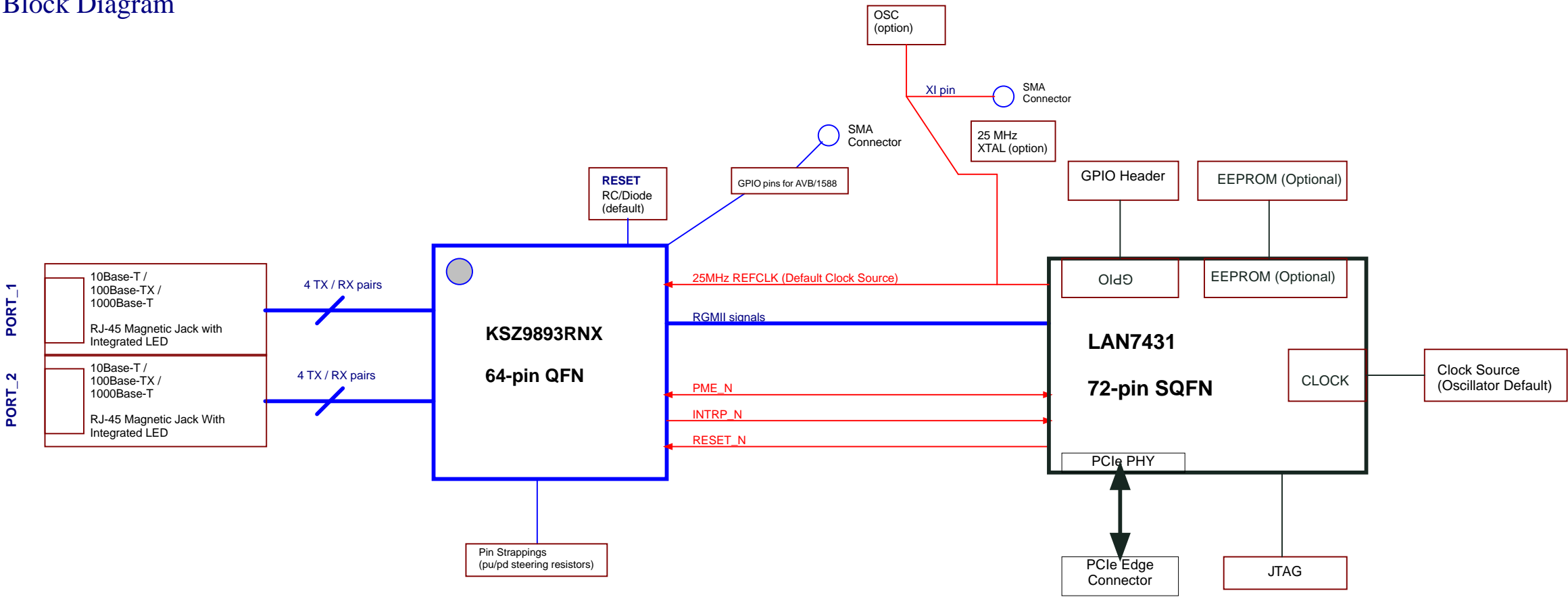


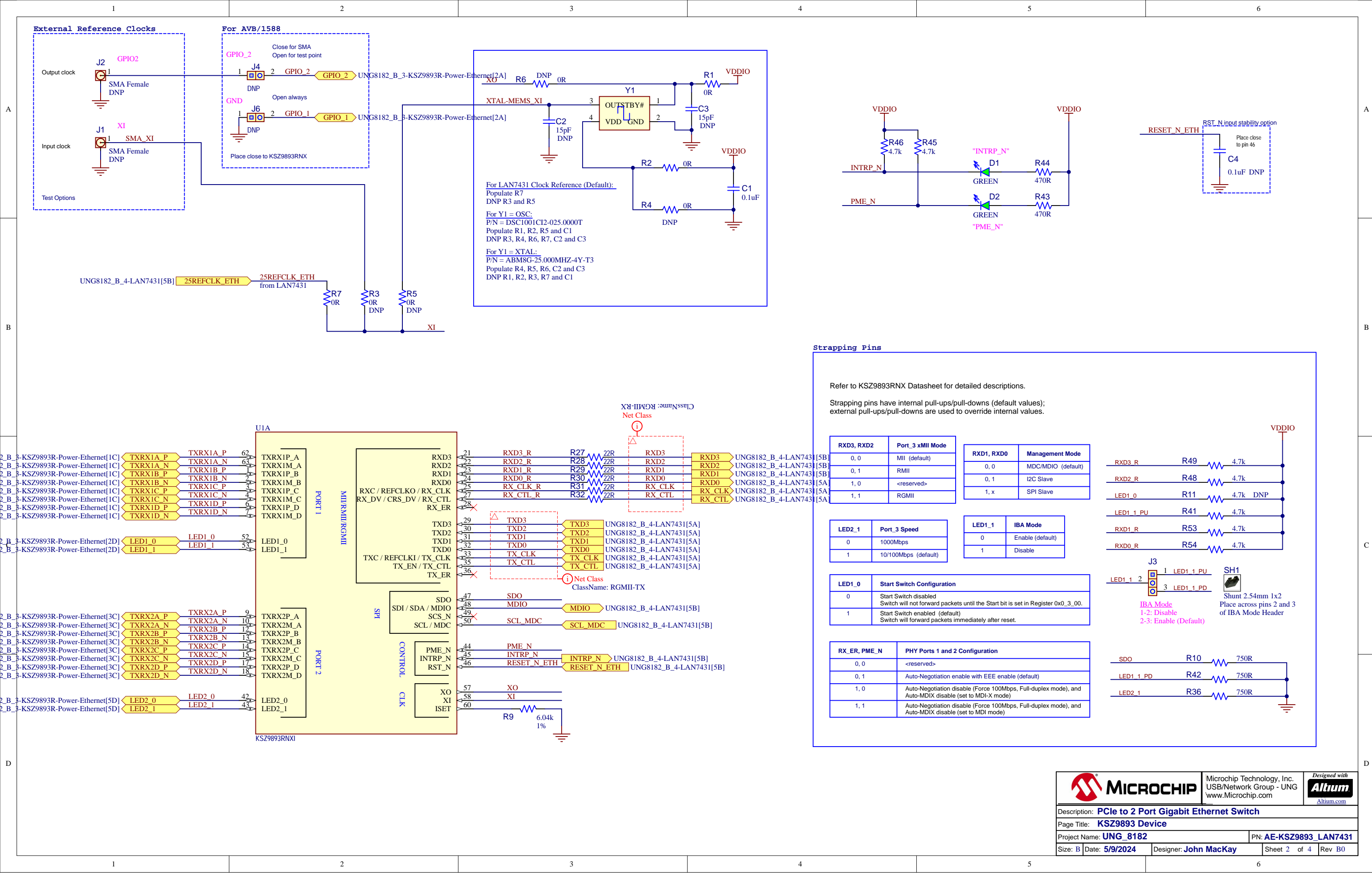
PCIe to 2-Port Gigabit Ethernet Switch

Table of Contents	
Sheet	Description
1	Block Diagram
2	KSZ9893 Device
3	KSZ9893 Power/Ethernet
4	LAN7431

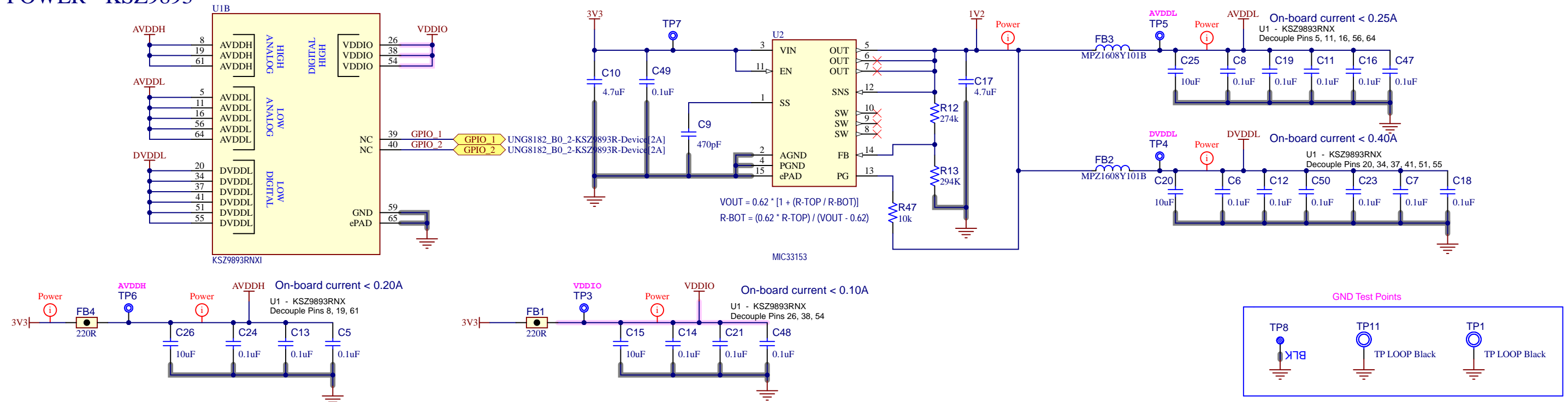
Revision History			
Revision	Date	Revision Summary	Author
A0	8/14/2018	Initial Release	John MacKay
B0	5/9/2024	Change R53/R54 from Pull-Down to Pull-up (KSZ9893 to use SPI)	John MacKay

Block Diagram





POWER - KSZ9893



ETHERNET

