

Getting Started with 3-Port Gigabit Ethernet Switch Configuration Options

*Author: Parthiv Pandya
Microchip Technology Inc.*

INTRODUCTION

Microchip's family of Gigabit Ethernet switches have powerful capabilities that may be enabled using various methods of configuration. Depending on the features needed in the network application, there are four primary methods to configure these switches. This application note describes available switch configuration methods and options with their associated trade-offs, allowing the developer to choose the best method for their application.

The following configuration options are available (*applicable Microchip parts*):

- [Configuration Straps](#) (KSZ9893R, KSZ9563R, KSZ8563R)
- [Microcontroller Configuration](#) (KSZ9893R, KSZ9563R, KSZ8563R)
- [Ethernet In-Band Access \(IBA\) Configuration](#) (KSZ9893R, KSZ9563R, KSZ8563R)
- [Host Processor Configuration](#) (KSZ9893R, KSZ9563R, KSZ8563R)

TABLE 1: AVAILABLE CONFIGURATION METHODS PER FEATURE

	Basic	Auto-Neg	EEE	VLAN	QoS	IEEE 1588 v2 (Note 2)	802.1x Security	ACL	PME	WoL	AVB (Note 3)
Config. Strap	X	X									
8-bit MCU	X	X	X	X	X			X			
IBA	X	X	X	X	X			X			
Host Processor	X	X	X	X	X	X	X	X	X	X	X

Note 1: Take note of the difference between switch configuration mode and switch management mode. Switch management mode provides the added ability to send and receive Ethernet frames during normal operation. Switch configuration mode does not provide this ability.

2: KSZ9893R does not support IEEE 1588 v2.

3: KSZ9893R does not support AVB.

CONFIGURATION STRAPS

The configuration strap option is a hardware method to configure the switch where pull-up or pull-down resistors are used to set the logic level high or low on strapping pins of the switch. For example, the KSZ9893R has several strapping pins with internal weak pull-up or pull-down resistors that allow the switch to operate in the unmanaged mode. A user can add 1-k Ω to 10-k Ω external pull-up resistors on non-LED pins, or 750- Ω to 1-k Ω pull-down resistors on LED strapping pins to override the effect of the weak internal resistors.

The strapping pins exhibit very high impedance when the device is in reset. They are internally sampled at the rising edge of the reset pin, RESET_N. Once the RESET_N pin is high, all of these pins become driven outputs.

AN2661

The user must be aware that the internal pull-up or pull-down resistors are weak. Therefore, if the application board uses any external pull-up or pull-down resistors, care must be taken. If an external processor is connected with a switch, the processor should also be checked for internal pull-ups or pull-downs, and it may be necessary to add an external resistor to reinforce the default internal resistor of the Microchip switch. The KSZ9xxx family's data sheet lists all the strapping pins, their functionalities, and default values.

An unmanaged Ethernet switch allows a quick and easy commissioning of the Ethernet network. A wide range of applications, including industrial control applications, can benefit tremendously from adding an unmanaged Ethernet switch, as it reduces the cost and complexity for the Ethernet network.

Unlike a managed switch, an unmanaged Ethernet switch does not require any external microcontroller, microprocessor, or system on chip (SoC) to manage its functions. It can easily be configured using strap-in options of the switch. Because of its ease of use, it is also known as a “plug and play” device.

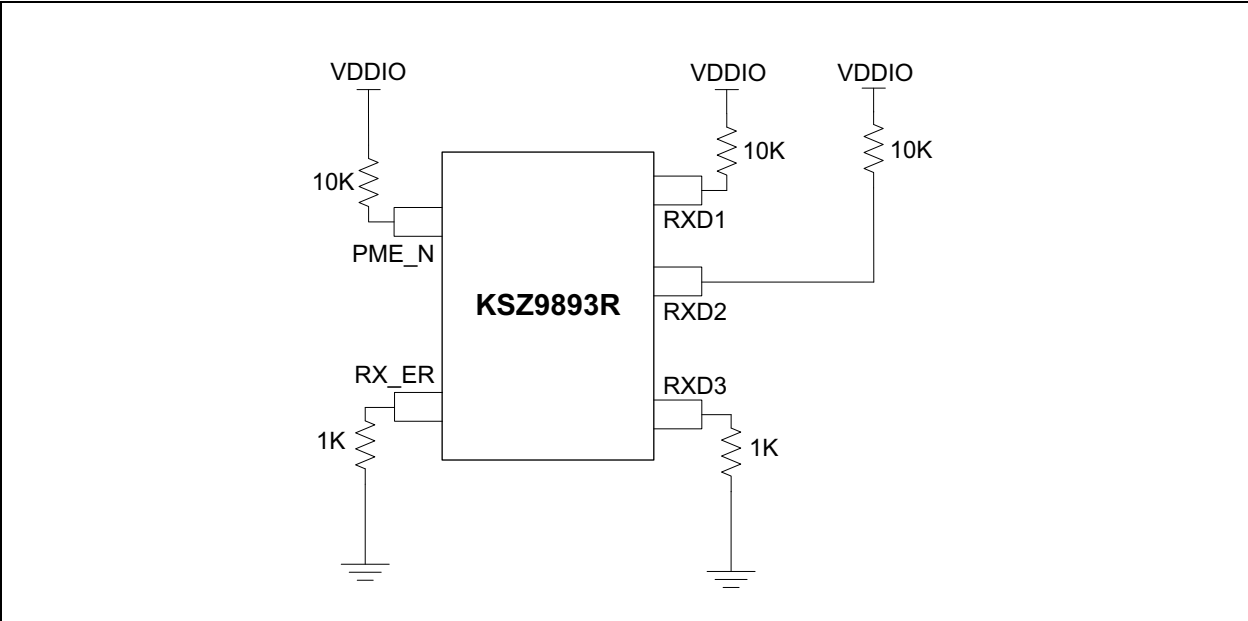
Example Configuration

The example circuit shown in [Figure 1](#) details the KSZ9893R switch in an unmanaged mode using configuration straps. The circuit enables auto-negotiation and the serial peripheral interface (SPI). The SPI can be used to access the internal registers for debugging purposes. The circuit also configures port 3 for RMII mode. [Table 2](#) shows the pin configuration.

TABLE 2: CONFIGURATION EXAMPLE

Pin number	Configuration strap pin	Description
28, 44	RX_ER, PME_N	[RX_ER, PME_N]: Ports 1 and 2 (PHY) Configuration 01: Auto-negotiation enable with EEE (Default)
23, 24	RXD1, RXD0	[RXD1, RXD0]: Serial Interface Mode 1X: SPI
21, 22	RXD3, RXD2	[RXD3, RXD2]: Port 3 (MAC) xMII Mode 01: RMII1:

FIGURE 1: EXAMPLE CONFIGURATION CIRCUIT



Note: For SPI configuration, RXD0 is a “don’t care” bit. Therefore, it does not need to be connected to either VDDIO or ground.

MICROCONTROLLER CONFIGURATION

In this switch configuration method, the management bus of the switch, such as SPI or I²C, is connected to a small microcontroller to configure its internal functions. The switch can be configured either as an SPI slave or as an I²C slave device in the system. Using the management bus, the microcontroller has read/write access to the device's configuration registers after device power-up, as described in the management interface section of the data sheet. Configuration strap pins are used to determine the interface mode in which the switch is operating. For example, in the KSZ9893R, the RXD1 and RXD0 pins decide the configuration interface:

RXD1, RXD0 = 01 = I²C Interface mode

RXD1, RXD0 = 1X = SPI Slave mode

The management interfaces provide read/write access to the switch and PHY registers. Between these two interfaces, the SPI provides the fastest speed.

Example Configuration

In this example, the Start Switch bit of the switch will be enabled via the SPI or I²C interface. [Figure 2](#) and [Figure 3](#) detail the example circuits for SPI and I²C interfaces, respectively. To enable the Start Switch bit, the user must write the following register:

Switch Operation Register: Address 0x0300, bit 0 = 1b

FIGURE 2: SPI INTERFACE CONNECTIONS WITH MCU

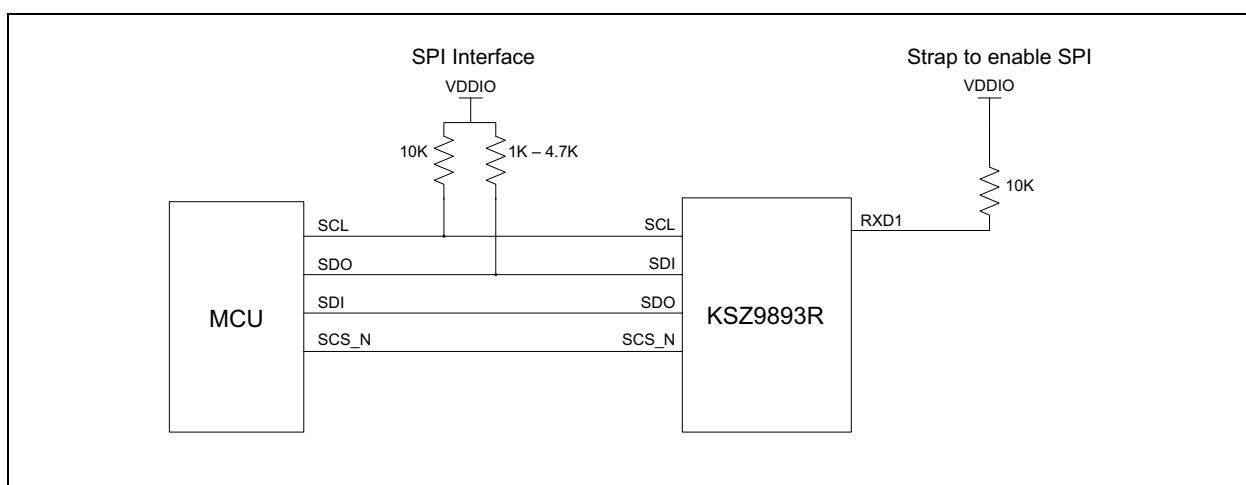
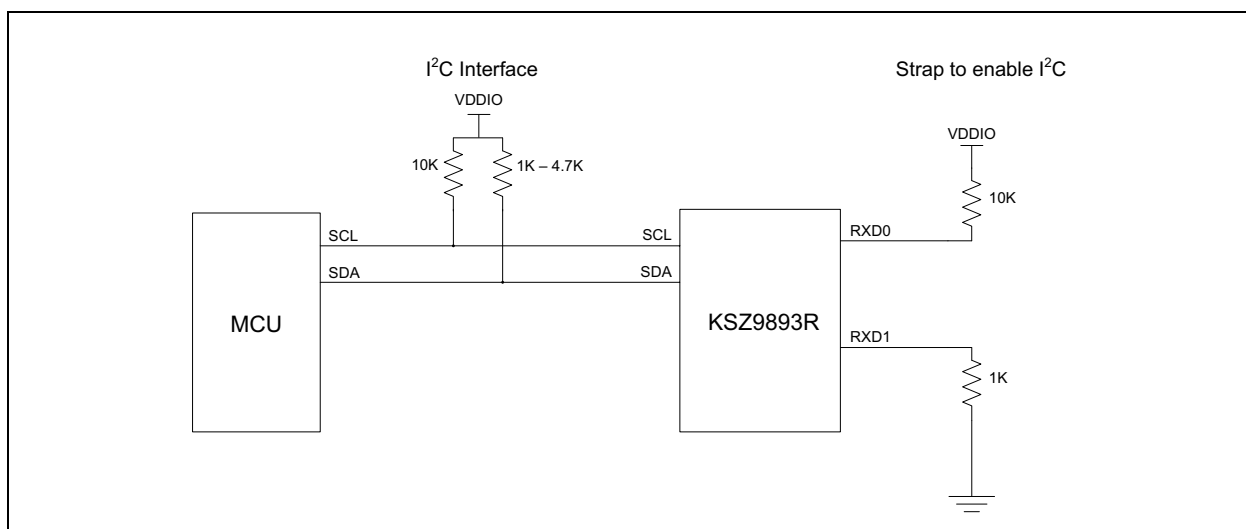


FIGURE 3: I²C INTERFACE CONNECTIONS WITH MCU



The data sheet of the switch provides additional information on how to configure the SPI and I²C bus interfaces with a microcontroller. Since this method uses a small microcontroller, the overall solution can be highly cost effective. Since the SPI and I²C interfaces are common interfaces, the connections do not require a high level of technical expertise.

Configuring the switch using a small microcontroller provides two advantages:

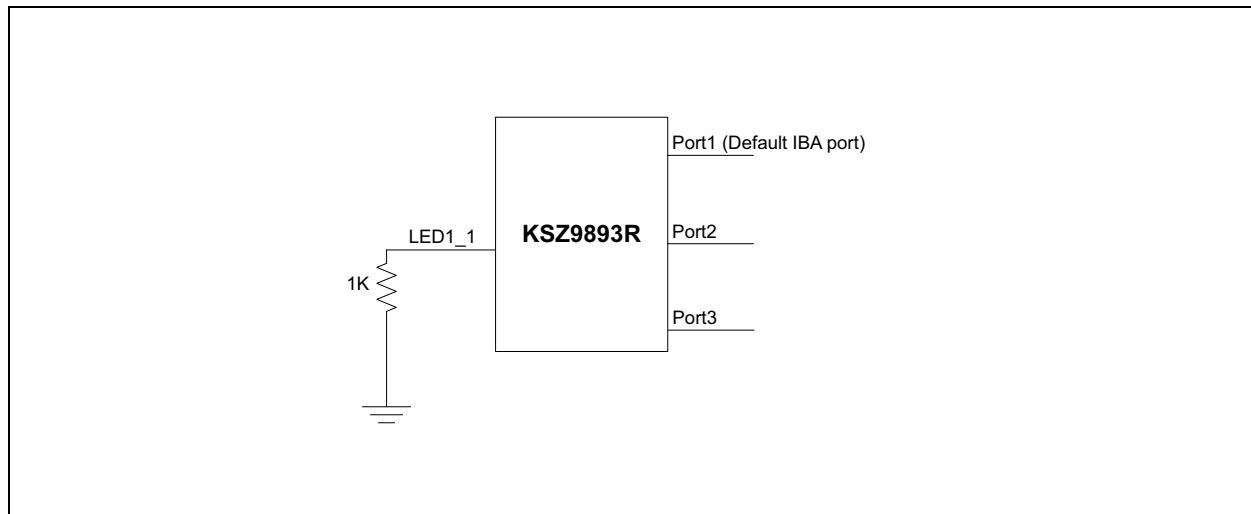
- Since this method uses an SPI or I²C bus, the microcontroller can gain access to both the switch and PHY register sets.
- If a microcontroller is chosen with a UART peripheral, an RS232 serial port can be added on the PCB for out-of-band switch management.

However, since small MCUs may not have enough memory, using this method may not provide the ability to configure high-end functions of the switch. MCUs are generally used only to preconfigure the switch on power-up and do not handle the packets from the switch port. To access and enable high-end functions of the switch, configuration of a host processor is suggested (see the [Host Processor Configuration](#) section).

ETHERNET IN-BAND ACCESS (IBA) CONFIGURATION

In this configuration method, the switch is configured through a network data port (Ethernet port). Register access requests are sent to the switch via Ethernet packets that are identified by a special header tag. In this method, a user can remotely configure switch functions such as spanning tree protocol (STP), quality of service (QoS), VLAN assignments, and so on. A PC-based utility may be used to configure these functions. Prior to using this method, the switch will require the IBA to be enabled via the in-band management configuration strap. For example, the KSZ9893R requires that the LED1_1 pin be pulled down to ground using a 1-kΩ resistor, as shown in [Figure 4](#).

FIGURE 4: IBA PIN STRAPPING



With the IBA pin strapping, PHY port 1 is assigned as the default IBA port. SPI or I²C management is required to enable MAC port 3 (host processor) as the IBA port.

The IBA configuration method provides the most efficient way to configure and manage the device, since the same Ethernet data port is used to configure the switch. This method is extremely useful in complex industrial environments, such as where voice over IP (VoIP) services are essential. In this situation, when VoIP traffic requires higher throughput, a user can remotely allocate more bandwidth to the network using the QoS function.

Note: A user can use IBA with I²C or SPI interface.

A switch is easily accessible via a PC, and the network is a security risk. At a minimum, the following precautions should be followed when using this method:

- The PC accessing the switch should have an adequate security level (that is, other than the network engineer, no other person should have access to it).
- The PC accessing the switch should be free of any malware or virus.
- The switch should be accessible only through the organization's internal network and not available to the outside world.

HOST PROCESSOR CONFIGURATION

In this switch configuration method, a high-end host processor is connected to the switch via the RGMII, RMII, or MII interface. The processor firmware provides a way to program the configuration registers of the switch. The processor can use either an SPI, I²C interface, or IBA to enable the switch functions and PHY functions, whereas the MII Management (MIIM – also known as MDC/MDIO) interface can be used to enable the PHY functions of the switch. The switch operates as an SPI or I²C slave in this method.

Compared to the [Microcontroller Configuration](#) method, this technique includes a high-end microprocessor (MPU) with more flash memory and RAM. This allows the MPU to host a complex operating system (OS) such as embedded Linux with a built-in TCP/IP stack that can manage the switch functions and its traffic in addition to configuring the switch. In this setup, the user can use Telnet or a web server application to configure the switch.

This configuration method is useful in applications where a system must be self-contained. Since the host processor can support full features such as a TCP/IP stack, use operating systems such as Linux, and switch management ports such as SPI and I²C, this method of configuration can be used in a self-contained system solution. The on-board Linux OS can enable and disable switch functions, such as VLAN, which can be difficult in the microcontroller based configuration method. Host processor configuration provides the ability to run advanced protocols such as 1588 and audio-video bridging (AVB).

CONFIGURATION METHOD TRADE-OFFS

Table 3 details the trade-offs of using different configuration methods.

TABLE 3: CONFIGURATION METHOD TRADE-OFFS

	Configuration Straps	Microcontroller	Ethernet IBA	Host Processor
Cost	<i>Least</i> Only a few passive components are required to configure the switch	<i>Moderate</i> Low-end MCU and its supporting circuitry are required	<i>Moderate</i> Hardware requires a few passive components and a free PC-based utility	<i>Most</i> A high-end MPU is required with supporting circuitry and OS
Features	<i>Low</i> Enables only basic features	<i>Moderate</i> Enables switch and PHY registers	<i>Moderate</i> Apart from switch and PHY registers, adds remote switch management	<i>Advanced</i> Access to switch and PHY registers, host TCP/IP stack, drivers for advanced features (for example, AVB, IEEE1588)
Ease of Use	<i>Easy</i> Requires basic electronic components and circuit configuration	<i>Moderate</i> Requires some knowledge of MCU-based application development	<i>Easy</i> Example web GUI provided by Microchip	<i>Moderate</i> Firmware development, driver installation, and switch/PHY configuration required
Required Expertise	<i>Basic</i> Hardware or circuit design knowledge required by the developer	<i>Basic to Moderate</i> Requires knowledge of MCU, firmware development, and development tools	<i>Moderate</i> User can start with an example web browser or PC-based utility	<i>Moderate</i> Requires knowledge of Linux OS, MPU development environment
System Development Time	<i>Quickest</i> All basic features are configured in hardware while developing the PCB	<i>Moderate</i> Firmware development is required for MCU	<i>Moderate</i> Web-based GUI is provided, but remote management may require additional setup	<i>Most</i> Requires firmware development and switch drivers

EVALUATION BOARDS

Microchip provides the following development boards to illustrate the different configuration methods explained in this application note:

- KSZ9563 Switch Evaluation Board with SAMA5D36A Development Board
- KSZ8563 Switch Evaluation Board with SAMA5D36A Development Board

A user can access the hardware design files and the software configuration tools from the evaluation board's product page at www.microchip.com.

APPENDIX A: APPLICATION NOTE REVISION HISTORY

TABLE A-1: REVISION HISTORY

Revision Level & Date	Section/Figure/Entry	Correction
DS00002661A (03-02-18)	Initial release	

THE MICROCHIP WEB SITE

Microchip provides online support via our WWW site at www.microchip.com. This web site is used as a means to make files and information easily available to customers. Accessible by using your favorite Internet browser, the web site contains the following information:

- **Product Support** – Data sheets and errata, application notes and sample programs, design resources, user's guides and hardware support documents, latest software releases and archived software
- **General Technical Support** – Frequently Asked Questions (FAQ), technical support requests, online discussion groups, Microchip consultant program member listing
- **Business of Microchip** – Product selector and ordering guides, latest Microchip press releases, listing of seminars and events, listings of Microchip sales offices, distributors and factory representatives

CUSTOMER CHANGE NOTIFICATION SERVICE

Microchip's customer notification service helps keep customers current on Microchip products. Subscribers will receive e-mail notification whenever there are changes, updates, revisions or errata related to a specified product family or development tool of interest.

To register, access the Microchip web site at www.microchip.com. Under "Support", click on "Customer Change Notification" and follow the registration instructions.

CUSTOMER SUPPORT

Users of Microchip products can receive assistance through several channels:

- Distributor or Representative
- Local Sales Office
- Field Application Engineer (FAE)
- Technical Support

Customers should contact their distributor, representative or Field Application Engineer (FAE) for support. Local sales offices are also available to help customers. A listing of sales offices and locations is included in the back of this document.

Technical support is available through the web site at: <http://microchip.com/support>

Note the following details of the code protection feature on Microchip devices:

- Microchip products meet the specification contained in their particular Microchip Data Sheet.
- Microchip believes that its family of products is one of the most secure families of its kind on the market today, when used in the intended manner and under normal conditions.
- There are dishonest and possibly illegal methods used to breach the code protection feature. All of these methods, to our knowledge, require using the Microchip products in a manner outside the operating specifications contained in Microchip's Data Sheets. Most likely, the person doing so is engaged in theft of intellectual property.
- Microchip is willing to work with the customer who is concerned about the integrity of their code.
- Neither Microchip nor any other semiconductor manufacturer can guarantee the security of their code. Code protection does not mean that we are guaranteeing the product as "unbreakable."

Code protection is constantly evolving. We at Microchip are committed to continuously improving the code protection features of our products. Attempts to break Microchip's code protection feature may be a violation of the Digital Millennium Copyright Act. If such acts allow unauthorized access to your software or other copyrighted work, you may have a right to sue for relief under that Act.

Information contained in this publication regarding device applications and the like is provided only for your convenience and may be superseded by updates. It is your responsibility to ensure that your application meets with your specifications. MICROCHIP MAKES NO REPRESENTATIONS OR WARRANTIES OF ANY KIND WHETHER EXPRESS OR IMPLIED, WRITTEN OR ORAL, STATUTORY OR OTHERWISE, RELATED TO THE INFORMATION, INCLUDING BUT NOT LIMITED TO ITS CONDITION, QUALITY, PERFORMANCE, MERCHANTABILITY OR FITNESS FOR PURPOSE. Microchip disclaims all liability arising from this information and its use. Use of Microchip devices in life support and/or safety applications is entirely at the buyer's risk, and the buyer agrees to defend, indemnify and hold harmless Microchip from any and all damages, claims, suits, or expenses resulting from such use. No licenses are conveyed, implicitly or otherwise, under any Microchip intellectual property rights unless otherwise stated.

Trademarks

The Microchip name and logo, the Microchip logo, AnyRate, AVR, AVR logo, AVR Freaks, BeaconThings, BitCloud, CryptoMemory, CryptoRF, dsPIC, FlashFlex, flexPWR, Heldo, JukeBlox, KEELOQ, KEELOQ logo, Klear, LANCheck, LINK MD, maXStylus, maXTouch, MediaLB, megaAVR, MOST, MOST logo, MPLAB, OptoLyzer, PIC, picoPower, PICSTART, PIC32 logo, Prochip Designer, QTouch, RightTouch, SAM-BA, SpyNIC, SST, SST Logo, SuperFlash, tinyAVR, UNI/O, and XMEGA are registered trademarks of Microchip Technology Incorporated in the U.S.A. and other countries.

ClockWorks, The Embedded Control Solutions Company, EtherSynch, Hyper Speed Control, HyperLight Load, IntelliMOS, mTouch, Precision Edge, and Quiet-Wire are registered trademarks of Microchip Technology Incorporated in the U.S.A.

Adjacent Key Suppression, AKS, Analog-for-the-Digital Age, Any Capacitor, AnyIn, AnyOut, BodyCom, chipKIT, chipKIT logo, CodeGuard, CryptoAuthentication, CryptoCompanion, CryptoController, dsPICDEM, dsPICDEM.net, Dynamic Average Matching, DAM, ECAN, EtherGREEN, In-Circuit Serial Programming, ICSP, Inter-Chip Connectivity, JitterBlocker, KlearNet, KlearNet logo, Mindi, MiWi, motorBench, MPASM, MPF, MPLAB Certified logo, MPLIB, MPLINK, MultiTRAK, NetDetach, Omniscient Code Generation, PICDEM, PICDEM.net, PICkit, PICtail, PureSilicon, QMatrix, RightTouch logo, REAL ICE, Ripple Blocker, SAM-ICE, Serial Quad I/O, SMART-I.S., SQI, SuperSwitcher, SuperSwitcher II, Total Endurance, TSHARC, USBCheck, VariSense, ViewSpan, WiperLock, Wireless DNA, and ZENA are trademarks of Microchip Technology Incorporated in the U.S.A. and other countries.

SQTP is a service mark of Microchip Technology Incorporated in the U.S.A.

Silicon Storage Technology is a registered trademark of Microchip Technology Inc. in other countries.

GestIC is a registered trademark of Microchip Technology Germany II GmbH & Co. KG, a subsidiary of Microchip Technology Inc., in other countries.

All other trademarks mentioned herein are property of their respective companies.

© 2018, Microchip Technology Incorporated, All Rights Reserved.

ISBN: 978-1-5224-2741-4

QUALITY MANAGEMENT SYSTEM
CERTIFIED BY DNV
= ISO/TS 16949 =

Microchip received ISO/TS-16949:2009 certification for its worldwide headquarters, design and wafer fabrication facilities in Chandler and Tempe, Arizona; Gresham, Oregon and design centers in California and India. The Company's quality system processes and procedures are for its PIC® MCUs and dsPIC® DSCs, KEELOQ® code hopping devices, Serial EEPROMs, microperipherals, nonvolatile memory and analog products. In addition, Microchip's quality system for the design and manufacture of development systems is ISO 9001:2000 certified.

Worldwide Sales and Service

AMERICAS

Corporate Office
2355 West Chandler Blvd.
Chandler, AZ 85224-6199
Tel: 480-792-7200
Fax: 480-792-7277
Technical Support:
<http://www.microchip.com/support>
Web Address:
www.microchip.com

Atlanta
Duluth, GA
Tel: 678-957-9614
Fax: 678-957-1455

Austin, TX
Tel: 512-257-3370

Boston
Westborough, MA
Tel: 774-760-0087
Fax: 774-760-0088

Chicago
Itasca, IL
Tel: 630-285-0071
Fax: 630-285-0075

Dallas
Addison, TX
Tel: 972-818-7423
Fax: 972-818-2924

Detroit
Novi, MI
Tel: 248-848-4000

Houston, TX
Tel: 281-894-5983

Indianapolis
Noblesville, IN
Tel: 317-773-8323
Fax: 317-773-5453
Tel: 317-536-2380

Los Angeles
Mission Viejo, CA
Tel: 949-462-9523
Fax: 949-462-9608
Tel: 951-273-7800

Raleigh, NC
Tel: 919-844-7510

New York, NY
Tel: 631-435-6000

San Jose, CA
Tel: 408-735-9110
Tel: 408-436-4270

Canada - Toronto
Tel: 905-695-1980
Fax: 905-695-2078

ASIA/PACIFIC

Australia - Sydney
Tel: 61-2-9868-6733

China - Beijing
Tel: 86-10-8569-7000

China - Chengdu
Tel: 86-28-8665-5511

China - Chongqing
Tel: 86-23-8980-9588

China - Dongguan
Tel: 86-769-8702-9880

China - Guangzhou
Tel: 86-20-8755-8029

China - Hangzhou
Tel: 86-571-8792-8115

China - Hong Kong SAR
Tel: 852-2943-5100

China - Nanjing
Tel: 86-25-8473-2460

China - Qingdao
Tel: 86-532-8502-7355

China - Shanghai
Tel: 86-21-3326-8000

China - Shenyang
Tel: 86-24-2334-2829

China - Shenzhen
Tel: 86-755-8864-2200

China - Suzhou
Tel: 86-186-6233-1526

China - Wuhan
Tel: 86-27-5980-5300

China - Xian
Tel: 86-29-8833-7252

China - Xiamen
Tel: 86-592-2388138

China - Zhuhai
Tel: 86-756-3210040

ASIA/PACIFIC

India - Bangalore
Tel: 91-80-3090-4444

India - New Delhi
Tel: 91-11-4160-8631

India - Pune
Tel: 91-20-4121-0141

Japan - Osaka
Tel: 81-6-6152-7160

Japan - Tokyo
Tel: 81-3-6880-3770

Korea - Daegu
Tel: 82-53-744-4301

Korea - Seoul
Tel: 82-2-554-7200

Malaysia - Kuala Lumpur
Tel: 60-3-7651-7906

Malaysia - Penang
Tel: 60-4-227-8870

Philippines - Manila
Tel: 63-2-634-9065

Singapore
Tel: 65-6334-8870

Taiwan - Hsin Chu
Tel: 886-3-577-8366

Taiwan - Kaohsiung
Tel: 886-7-213-7830

Taiwan - Taipei
Tel: 886-2-2508-8600

Thailand - Bangkok
Tel: 66-2-694-1351

Vietnam - Ho Chi Minh
Tel: 84-28-5448-2100

EUROPE

Austria - Wels
Tel: 43-7242-2244-39
Fax: 43-7242-2244-393

Denmark - Copenhagen
Tel: 45-4450-2828
Fax: 45-4485-2829

Finland - Espoo
Tel: 358-9-4520-820

France - Paris
Tel: 33-1-69-53-63-20
Fax: 33-1-69-30-90-79

Germany - Garching
Tel: 49-8931-9700

Germany - Haan
Tel: 49-2129-3766400

Germany - Heilbronn
Tel: 49-7131-67-3636

Germany - Karlsruhe
Tel: 49-721-625370

Germany - Munich
Tel: 49-89-627-144-0
Fax: 49-89-627-144-44

Germany - Rosenheim
Tel: 49-8031-354-560

Israel - Ra'anana
Tel: 972-9-744-7705

Italy - Milan
Tel: 39-0331-742611
Fax: 39-0331-466781

Italy - Padova
Tel: 39-049-7625286

Netherlands - Drunen
Tel: 31-416-690399
Fax: 31-416-690340

Norway - Trondheim
Tel: 47-7289-7561

Poland - Warsaw
Tel: 48-22-3325737

Romania - Bucharest
Tel: 40-21-407-87-50

Spain - Madrid
Tel: 34-91-708-08-90
Fax: 34-91-708-08-91

Sweden - Gothenberg
Tel: 46-31-704-60-40

Sweden - Stockholm
Tel: 46-8-5090-4654

UK - Wokingham
Tel: 44-118-921-5800
Fax: 44-118-921-5820