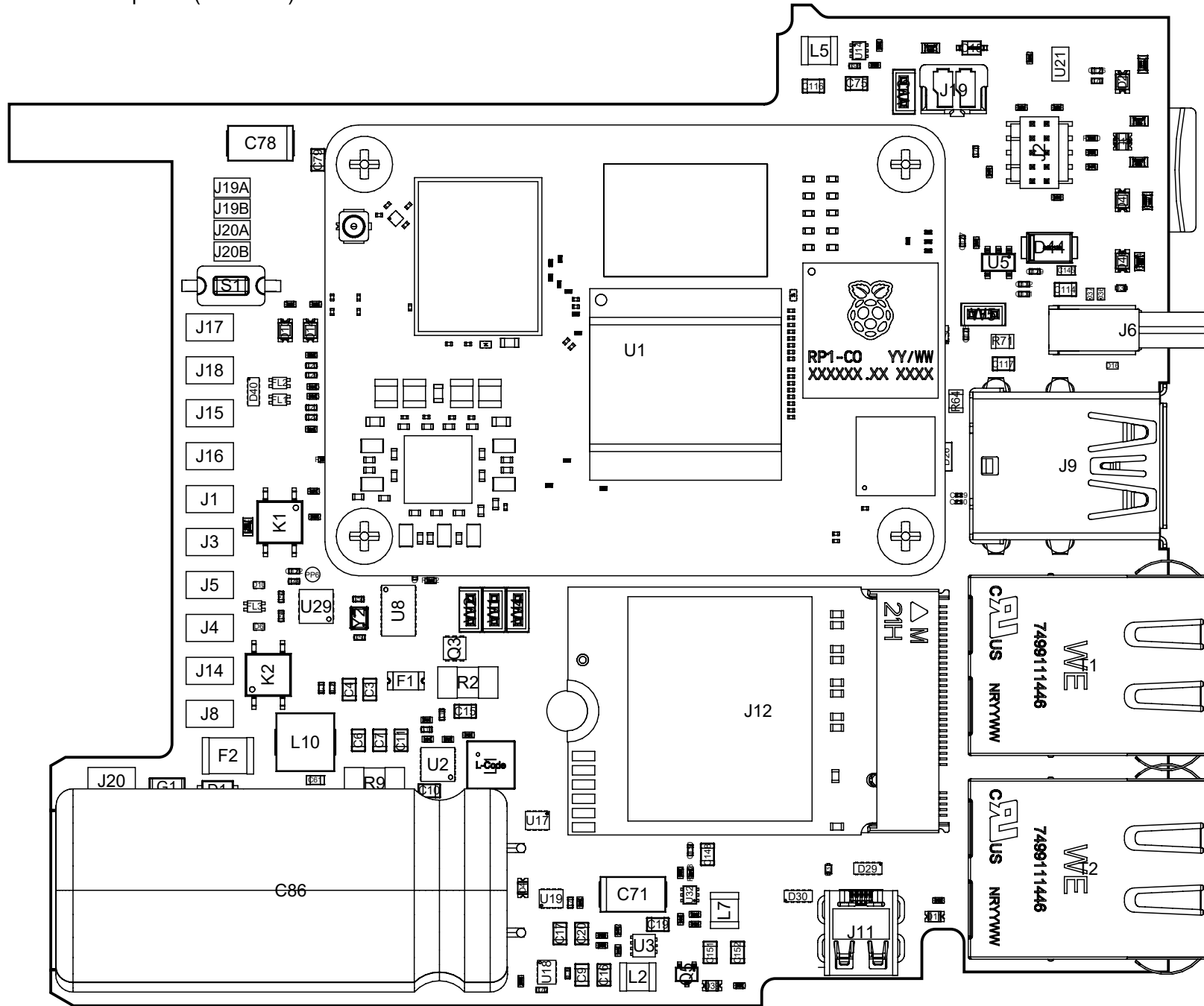


View from Top side (Scale 2:1)



A

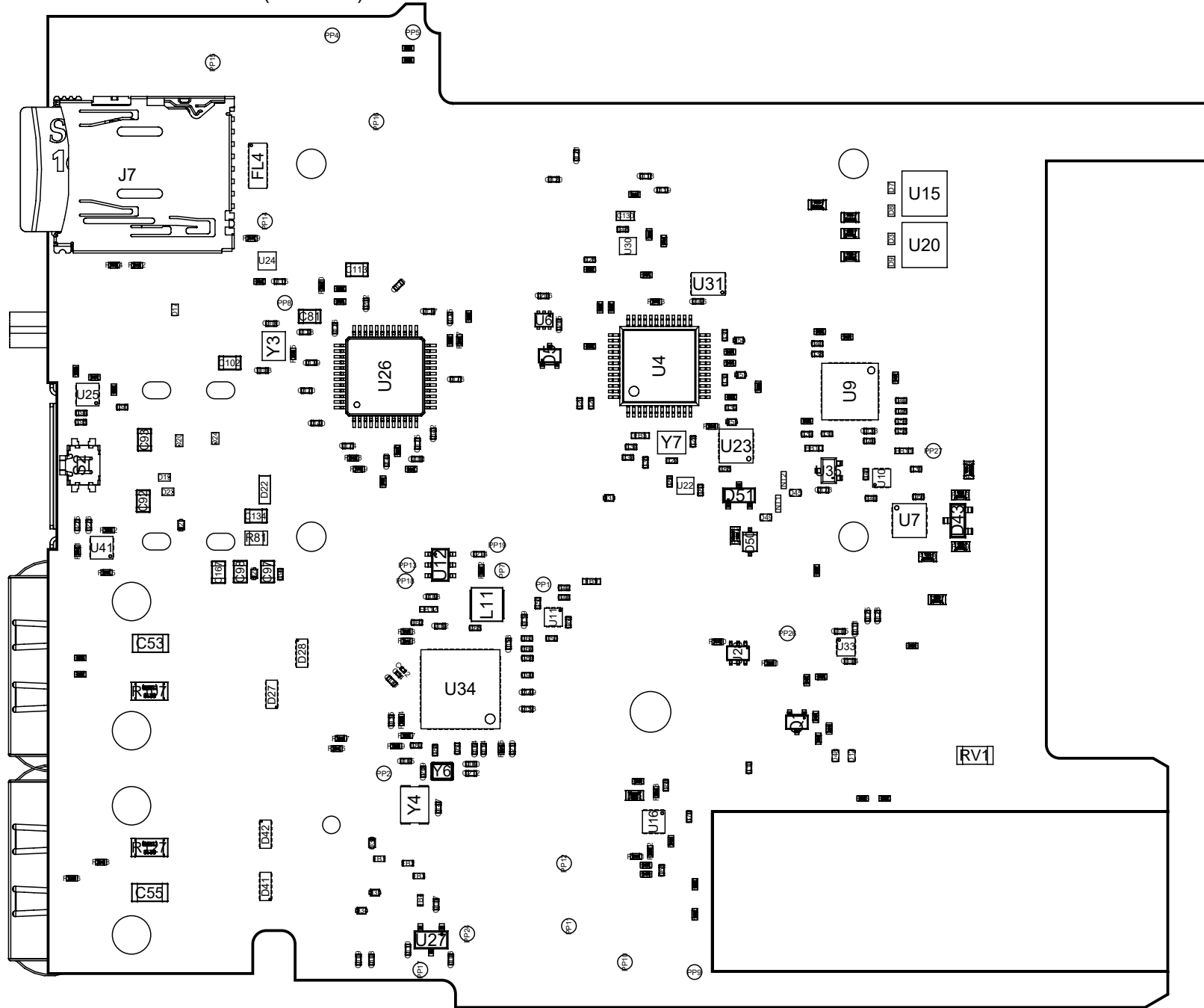
B

C

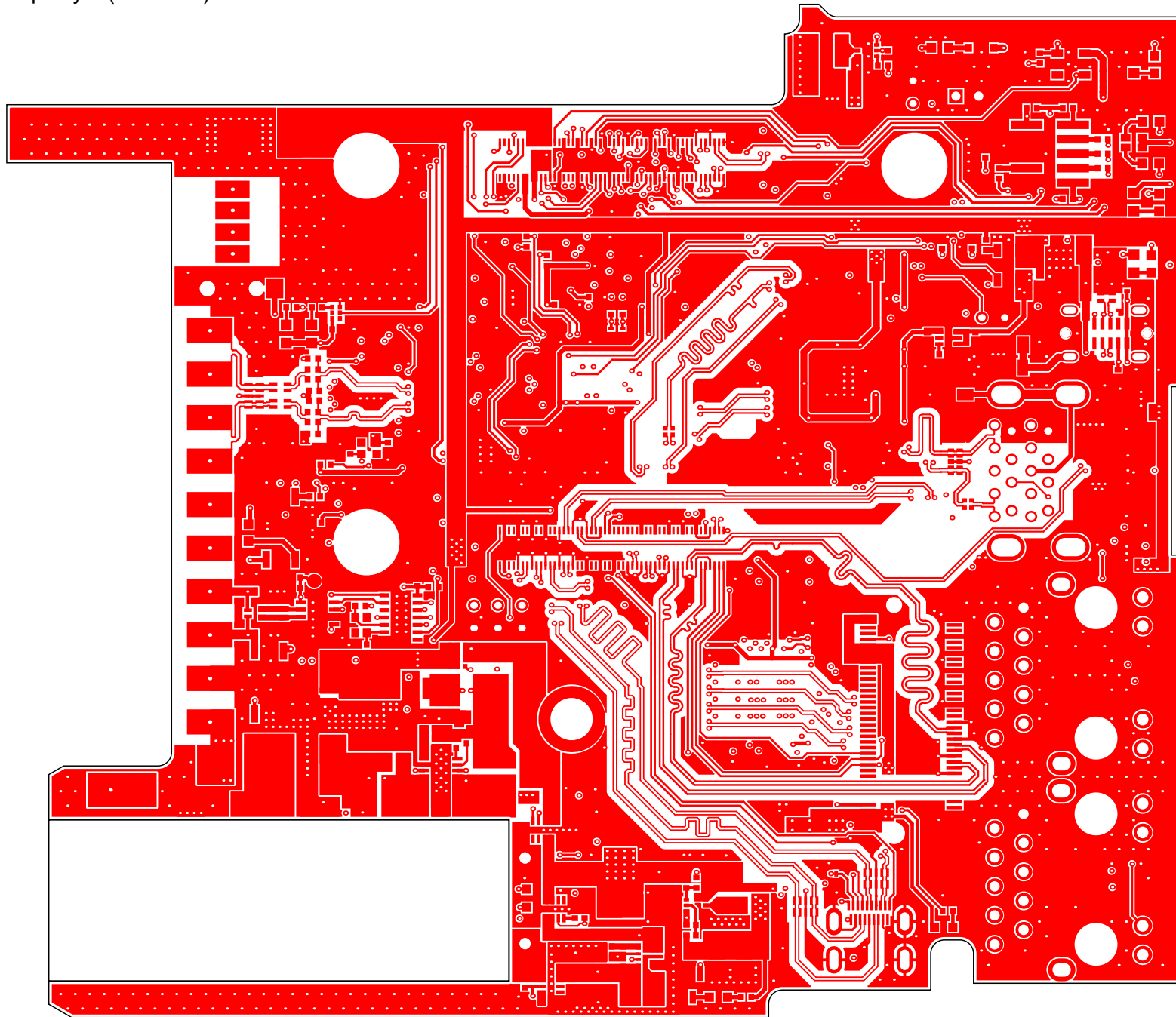
D

E

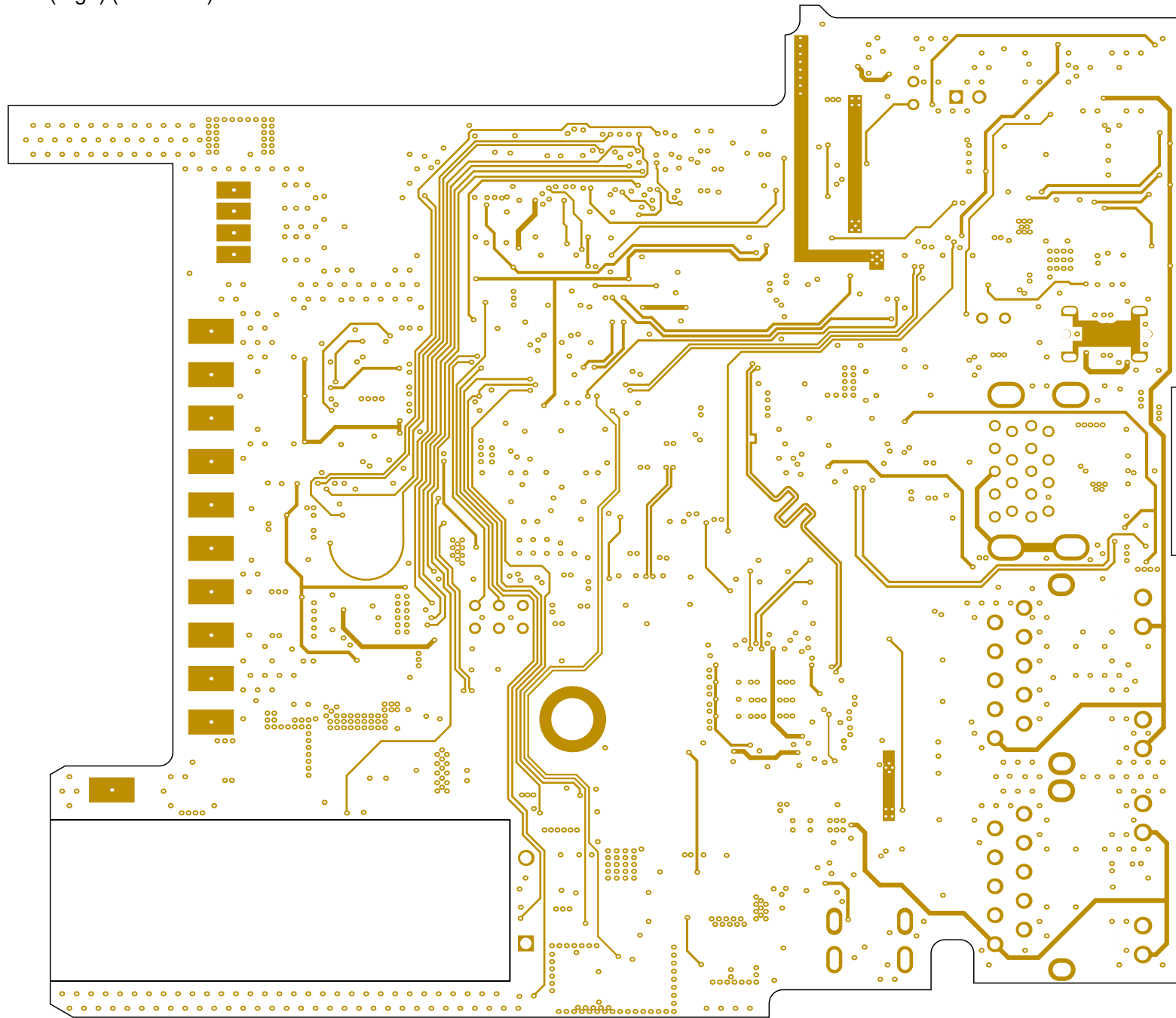
View from Bottom side (Scale 2:1)



Top Layer (Scale 2:1)



Int2 (Sign) (Scale 2:1)



A

B

C

D

E

Int3 (Sign) (Scale 2:1)

1

1

2

2

3

3

4

4

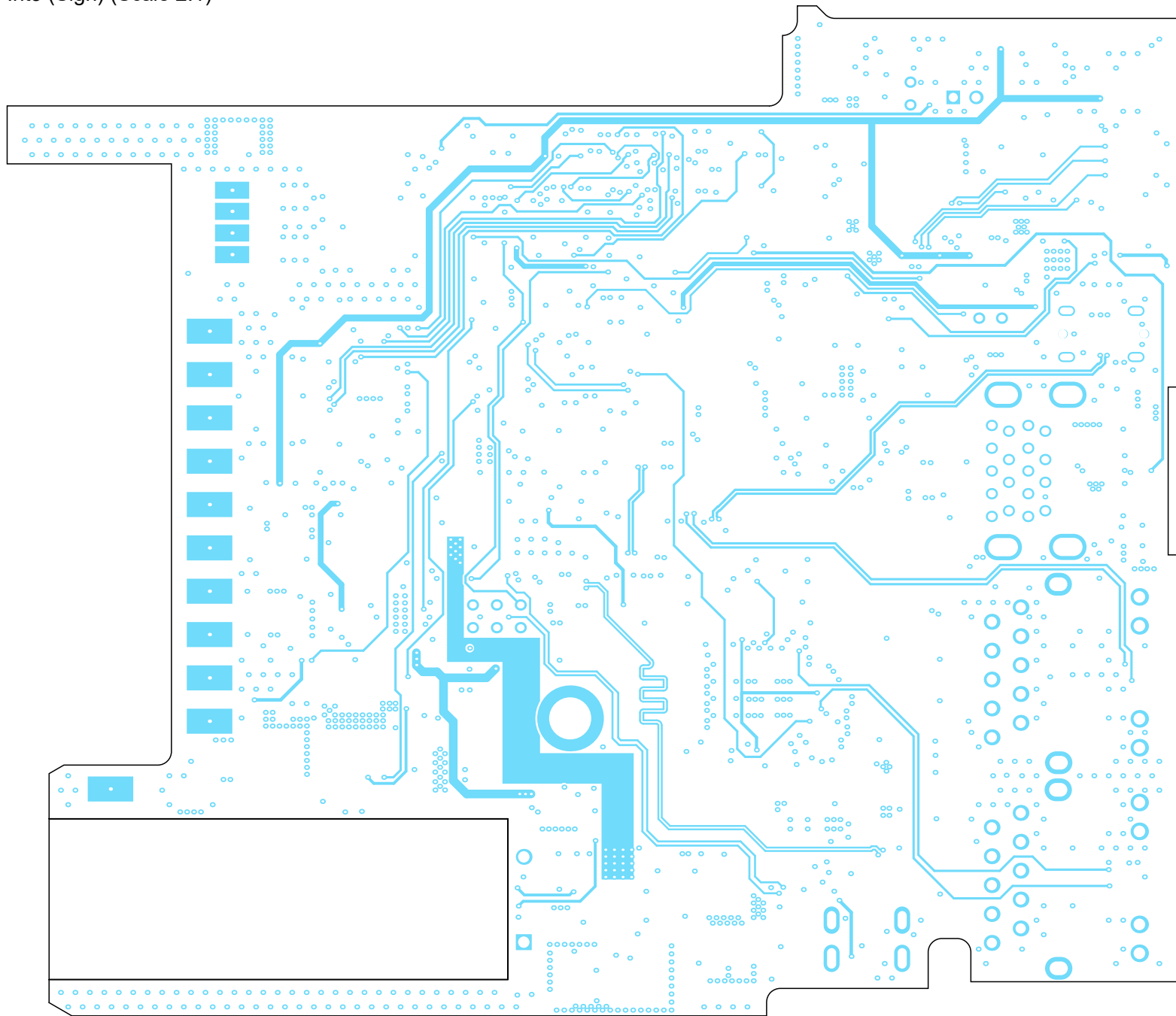
A

B

C

D

E



A

B

C

D

E

Bottom Layer (Scale 2:1)

1

1

2

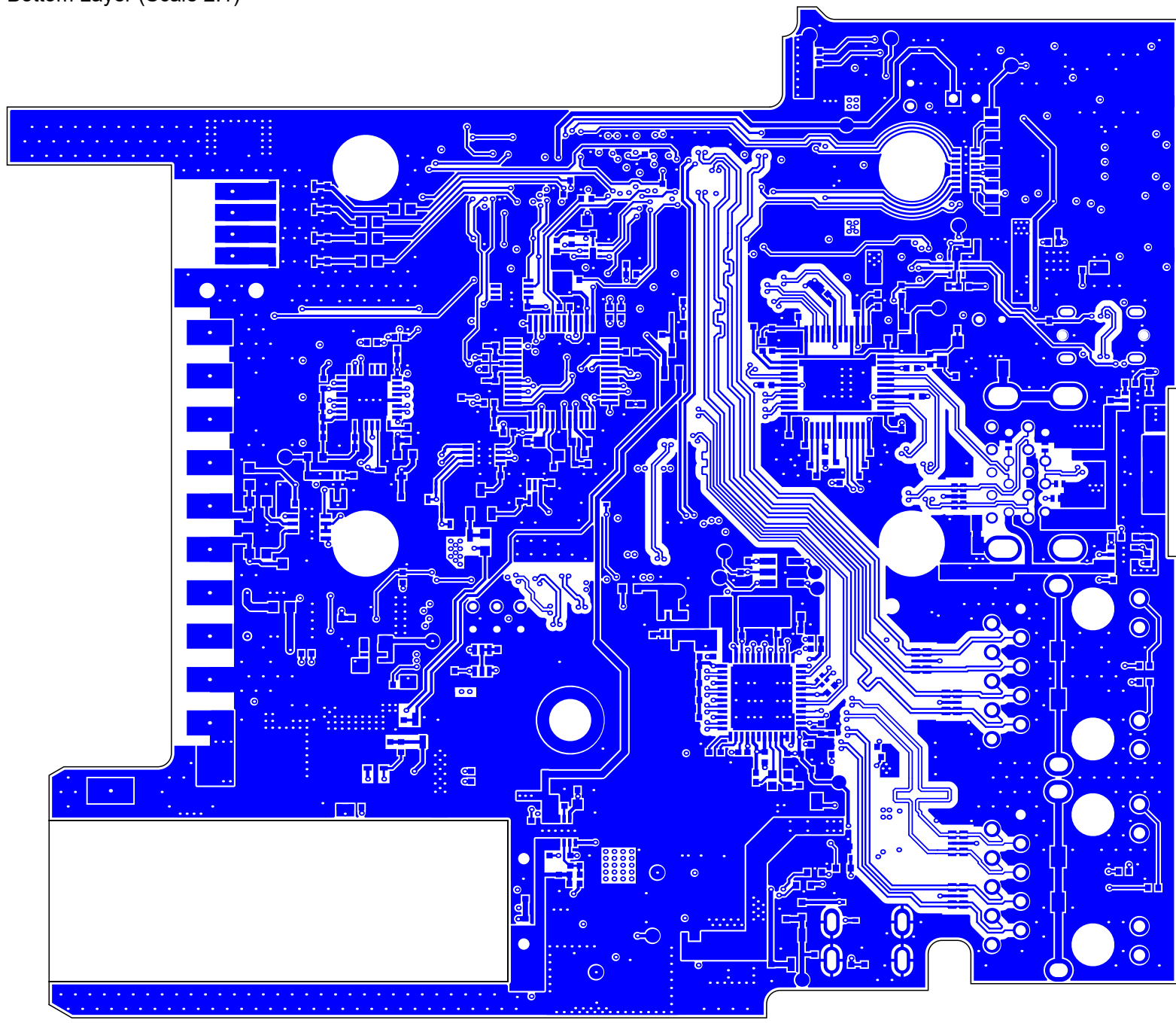
2

3

3

4

4



A

B

C

D

E

Layer Stack Legend

| Material | Layer | Thickness | Dielectric Material | Material Type | Gerber |
|----------------|-----------------------|---------------|---------------------|-----------------------|------------|
| | Top Overlay | | | Legend | GTO |
| | Surface Material | 0.03mm | SM-001 | Solder Mask | GTS |
| PbSn | Top Surface Finish | 0.02mm | | Surface Finish | |
| CF-004 | Top Layer | 0.04mm | | Signal | GTL |
| <i>Prepreg</i> | | <i>0.10mm</i> | <i>PP-015</i> | <i>Dielectric</i> | |
| CF-004 | Int1 (GND) | 0.02mm | | Internal Plane | GP1 |
| <i>Core</i> | | <i>0.55mm</i> | <i>Core-035</i> | <i>Dielectric</i> | |
| CF-004 | Int2 (Sign) | 0.02mm | | Signal | G1 |
| <i>Prepreg</i> | | <i>0.11mm</i> | <i>PP-016</i> | <i>Dielectric</i> | |
| CF-004 | Int3 (Sign) | 0.02mm | | Signal | G2 |
| <i>Core</i> | | <i>0.55mm</i> | <i>Core-035</i> | <i>Dielectric</i> | |
| CF-004 | Int4 (GND) | 0.02mm | | Internal Plane | GP2 |
| <i>Prepreg</i> | | <i>0.10mm</i> | <i>PP-015</i> | <i>Dielectric</i> | |
| CF-004 | Bottom Layer | 0.04mm | | Signal | GBL |
| PbSn | Bottom Surface Finish | 0.02mm | | Surface Finish | |
| | Surface Material | 0.03mm | SM-001 | Solder Mask | GBS |
| | Bottom Overlay | | | Legend | GBO |

Total thickness: 1.64mm

1

2

3

4

1

2

3

4

A

B

C

D

E

Drill Table

| Symbol | Count | Hole Size | Plated | Hole Tolerance |
|--------|------------|----------------|------------|----------------|
| F | 1453 | 0.20mm(8mil) | Plated | |
| ▽ | 15 | 0.30mm(12mil) | Plated | |
| ◇ | 14 | 0.60mm(24mil) | Plated | |
| ⊕ | 18 | 0.65mm(26mil) | Plated | |
| K | 2 | 0.80mm(31mil) | Non-Plated | |
| ⊞ | 6 | 0.80mm(31mil) | Plated | |
| ⊗ | 20 | 0.90mm(35mil) | Plated | |
| □ | 2 | 1.00mm(39mil) | Plated | |
| D | 8 | 1.02mm(40mil) | Plated | |
| ⊗ | 1 | 1.10mm(43mil) | Non-Plated | |
| ⊞ | 1 | 1.10mm(43mil) | Plated | |
| ▽ | 1 | 1.15mm(45mil) | Non-Plated | |
| ⊗ | 4 | 1.20mm(47mil) | Plated | |
| C | 4 | 1.60mm(63mil) | Plated | |
| ○ | 1 | 1.65mm(65mil) | Non-Plated | |
| A | 4 | 2.70mm(106mil) | Plated | |
| ⊗ | 4 | 3.50mm(138mil) | Non-Plated | |
| ☆ | 1 | 3.70mm(146mil) | Plated | |
| | 1559 Total | | | |

Realistic View

